



Biology



All biology models listed are made from reinforced fibre Glass and PVC Materials and PVD Materials (Unbreakable), finished in Natural Colours.

SB-3650 HUMAN TORSO WITH HEAD

A very useful and beautiful model of natural size dissectable into 10 parts without sterno abdominal wall but with ribs, sternum, clavicle with their attachments. Thoracic and abdominal organs attached all parts like lungs, heart, stomach liver intestine etc. for detailed study are detachable. Half of the skull cap is removed to show brain and its structure, which can be taken out, sectioned head and neck, is showing internal organs of that region, sexless model, and overall dimensions 440 x 280 x 920mm approx. With detailed key card.



SB-3650

SIMILAR TO ABOVE, BUT WITH 7 PARTS.



SB-3655

SB-3655 HUMAN TORSO WITHOUT HEAD

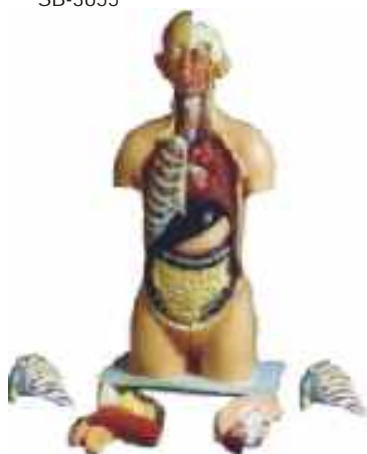
Dissectable in 8 parts. This model is suitable for the teaching of elementary internal gross anatomy. All the major anatomical details are featured. The Heart stomach, liver and intestine are removable for examination and to expose the posterior surface of the abdominal wall. The major blood vessels are shown; the heart, lung and kidney are sectioned to expose internal details. With detailed key card.

SB-3660 HUMAN TORSO WITH INTERCHANGABLE SEX ORGANS

A full size torso similar to Cat. No. BI-1001 with interchangeable sex organs. Dissectable into 14 parts. On base with detailed key card.

HUMAN TORSO WITHOUT HEAD MALE / FEMALE

Same as above, but dissectable into 12 parts with male and female reproductive organs, which can be removed and dissectable into two parts.



SB-3660

SB-3663 HUMAN TORSO HALF SIZE WITH HEAD

Youth Model, approx, 600mm in height, dissectable into 6 parts. The brain fixed in skull seen after removing the skull cap, lungs, liver, stomach and intestine are removable to show the internal structure. Dimensions overall 260 x 235 x 560mm. With detailed key card.



SB-3663

SB-3665

SB-3665 HUMAN TORSO MINIATURE WITHOUT HEAD

Similar to Cat. No. B-1007 but without head. Separates in 6 parts. On base, With detailed key card.

SB-3668 HEAD & BRAIN MODEL (SKULL AND BRAIN)

Dissectable in 3 parts, life size model, mounted on board, the brain is dissected into 2 parts and can be taken out to show the important parts of skull and cranial nerves etc. On base, With detailed key card.



SB-3668



SB-3668

SB-3668 HALF HEAD WITH MUSCLES, MEDIAN SECTION

Natural size, shows, Median section of head, brain, nose, mouth and pharynx, larynx and vertebral column of the neck. On base, with detailed key card.

SB-3670 HEAD AND NECK

A relief model on base board, natural size, showing all internal organs, size approx 300 x 200mm.



SB-3670

SB-3675 BRAIN MODEL

AA life size 4 parts model of human brain. The model is a median section. The right hemisphere has the cerebellum and stem with occipital lobe. On base, with detailed key card.



SB-3675

SB-3678

Same as above but dissectable in 2 parts SB-3679

Same as above, but dissectable in 6 parts SB-3680

SB-3680 HUMAN NOSE L.S.

Enlarged approx. 2 times, crossing of windpipe and esophagus can be easily demonstrated. On base, with detailed key card.

SB-3682 SPINAL CORD MODEL

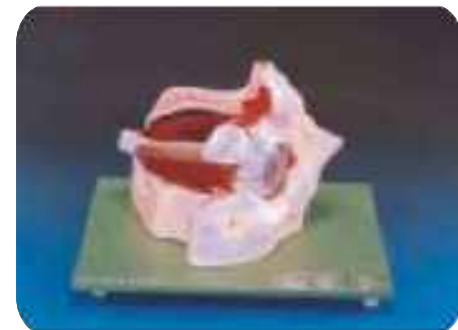
With nerve braches, enlarged approx.. 10 times. On base, with detailed key card.

SB-3685 HUMAN EYE MODEL

3 times enlarged-dissectable into 6 parts. The upper half of the sclera with cornea and eye muscle attachments, both halves of choroid with iris and retina, lens and vitreous humor are removable. On base, with detailed key card.

SB-3688 EYE WITH LID

Same as above, but with lid.



SB-3688



SB-3690

SB-3688 HUMAN EYE IN BONY ORBIT

A 3 times, enlarged model of the eye with 9 parts in bony orbit. The upper half eye ball is removable and dissects into 6 parts showing anatomical details. Out of six muscles controlling the eye ball, two are removable on base, with detailed key car

SB-3690 HUMAN EYE 5 TIMES ENLARGED

This is a highly improved and enlarged model to illustrate fine details in three dimensional reliefs presenting many features not found in ordinary model. The model is out into horizontal plane and separable into 7 parts. After removing the upper half of the sclera (outer shell), the choroid with its verticose veins is exposed, with the removal of second shell (the choroid) details of the retina comes into view the position of the yellow and blind spot is visible. All important anatomical features such as muscle insertions, optic, nerve, blood vessels, ciliary body, cornea, crystalline lens, and iris etc. On base, with detailed key card.



SB-3680



SB-3685



SB-3688

SB-3695 HUMAN EAR MODEL

Four times enlarged approx.. The petros portion of the temporal bone section of the auditory canal is removable. The tempanic membrane with malleus and incus are also removable, dissectable into 3 parts, mounted on base.



SB-3697 HUMAN EAR MODEL

Approx.. 5 to 6 times enlarged, on base with pinna, dissectable into 4 parts. The mechanism of hearing can be easily explained.



SB-3700 HUMAN EAR MODEL

Two times enlarged, dissectable into 3 parts, showing external, middle and internal ear, mounted on base.



SB-3702 TOOTH MODEL

Molar Tooth dissects into 2 parts, showing the internal structure. On base, with detailed key card.

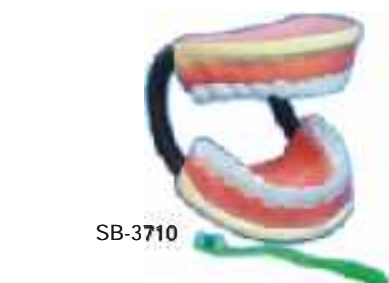
SB-3705 UPPER TRIPLE ROOT MOLAR WITH CARIES

15 times in 2 parts longitudinal section through crown 2 roots and pulp cavity. On base, with detailed key card.



SB-3708 HUMAN UPPER TRIPLE ROOT MOLAR

Dissectable in 6 parts, greatly enlarged, longitudinal section through the crown, 2 roots and pulp cavity are clearly shown, pulp can be removed to show different stages, on stand, with detailed key card.



SB-3710 DENTAL CARE MODEL

This model is enlarged enough for showing cleaning techniques with tooth brush.

SB-3712 UPPER AND LOWER JAW

This model is enlarged enough for showing cleaning techniques with tooth brush.



SB-3712

SB-3715 HUMAN UPPER AND LOWER JAWS

Showing various positions of teeth in upper and lower permanent canine and permanent premolar, milk canine, milk premolars, permanent incisors in full view and also the arteries, veins and nerves serving them. On base, with detailed key card.

SB-3717 HUMAN TEETH WITH LOWER JAW

Showing the full details, pulp cavity, gums, arteries and veins, colored. On base, with detailed key card.



SB-3717

SB-3720 TEETH WITH TONGUE

In two parts, with detachable teeth of lower jaw. On base, with detailed key card.



SB-3720



SB-3722

SB-3722 LARYNX FULL SIZE, 2 PARTS

Model shows Larynx, wind pipe, ligaments, muscles and thyroid gland. The model is medially divided, one half removable. On base, with detailed key card.

SB-3725 LARYNX FULL SIZE, 3 PARTS

Same as above, but dissectable into 3 parts.



SB-3728

SB-3728 LARYNX WITH TONGUE

Natural size, larynx, cartilages, ligaments, muscles, relief of mucous, membrane and thyroid gland are shown. Tong: the front part of the lower jaw detachable, separates into two parts, median sections. Sublingual gland and sub mandibular gland are shown. Separates into 3 parts. On base, with detailed key card.

SB-3730 HUMAN LUNGS

Dissectable into 2 parts showing all the important parts. On base, with detailed key card.



SB-3730

SB-3733 HUMAN LUNGS WITH HEART

Dissectable in 4 parts, mounted on board size 300 x 400 x 110mm. approx. , showing the position of lungs, and heart etc.



SB-3733

SB-3735 MODEL OF THE TRANSPARENT LUNGS

Presents 10 segments in the right lung and 8 segments in the left. The distribution of bronchial tree can be observed through the transparent. The lungs made of transparent plastic. The trachea and bronchial tree is made of PVC.



SB-3738

SB-3738 HUMAN LUNGS WITH HEART & LARYNX

This model shows the viscera of thorax can be separated into 7 parts, lungs, heart and larynx can also be removed. A very detailed model, mounted on board.



SB-3745

SB-3740 HUMAN HEART MODEL, GIANT SIZE

The heart model in two parts with mitral and tricuspid valve and with artery and veins, colored and fully detailed and labeled key card.

SB-3742 HEART MODEL

Same as above but in 4 parts. Bronchus of diaphragm can be removed

SB-3745 HEART 3 TIMES

Enlarged. Sectioned so the both ventricle and atria open to expose the valve. Large blood vessels near the heart and musculature of the Heart are shown. Separates into 4 parts. On bas, with detailed key cards.



SB-3748

SB-3748 HUMAN HEART MODEL

Dissectable into 2 parts, very useful for elementary class students, showing all main parts of heart with detailed key card, 3 times enlarged.

SB-3750 HUMAN HEART, 2 PARTS

The front heart is removable to view the chambers. Delivered on removable stand. With detailed key card.

SB-3752 HUMAN HEART

Natural size, dissectable into two parts, mounted on stand with key card.

SB-3755 HUMAN STOMACH MODEL

Showing external and internal details, large size, mounted on stand. Dissectable into 2 parts.

SB-3758 LIVER WITH GALL BLADDER

Natural size, showing the four lobes of the liver, the peritoneum. The gall bladder and vessels. On stand, with detailed key card.

SB-3760 SECTION OF SKIN MODEL

A full size model, 70 times enlarged, shows a section through the three layers of the hair covered skin of the head. The model shows hair follicles with sebaceous, sweat glands, receptors, nerves and vessels. On base, with detailed key card.



SB-3750



SB-3760



SB-3763



SB-3765

SB-3763 HUMAN DIGESTIVE SYSTEM

This model is dissectable into 2 parts, showing all internal details like nose, mouth cavity and pharynx, esophagus the gastrointestinal tract, liver with gall bladder pancreas and spleen. Duodenum, cecum and rectum are opened. The transverse colon is removable. Mounted on board with detailed key card.

SB-3765 HUMAN CIRCULATORY SYSTEM

Explaining the complete blood circulation in veins and arteries. Mounted on board. On base, with detailed key card.

SB-3768 HUMAN RESPIRATORY SYSTEM

Showing clearly all the important parts, Mounted on Board, Complete with Key Card.

SB-3770 HUMAN NERVOUS SYSTEM

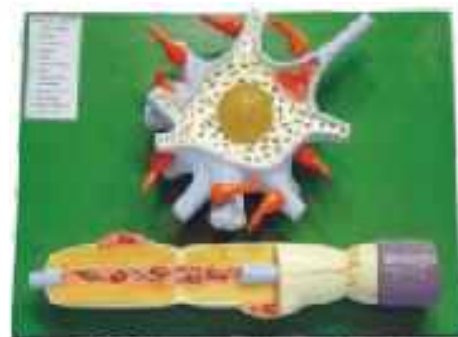
Showing brain and details of spinal cord and central and peripheral nervous system with outline of the whole human body. Mounted on board. With detailed key card.



SB-3770

SB-3775 NEURON MODEL

Approx. 2500 times enlarged to show the outer lipid membrane with protein structure and the internal nucleus which contains the viral hereditary matter(RNA). The nucleus is removable and condoms can be put underneath to provide a message regarding measures to take in protection gains HIV.



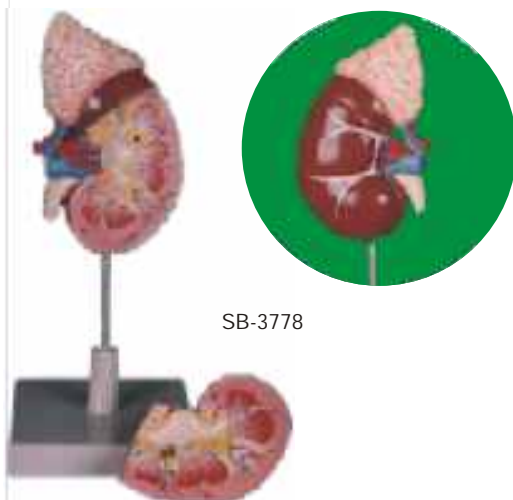
SB-3775

SB-3777 KIDNEY SECTION, NEPHRON AND BLOOD VESSELS AND KIDNEY GLOMERULUS

This model is a set of 3 models showing the nephron, Kidney and Glomerulus. The frontal section of the kidney is enlarged up to 3 times showing the overall structure with schematic of the Nephron and Henles Loop. The second model features the renal tubules, glomeruli with arterioles. The third model shows the capsules, afferent and efferent arterioles etc. The model are mounted on board with detailed card.



SB-3777



SB-3778

SB-3778 KIDNEY WITH ADRENAL GLAND, 2 PART

This model shows kidney with adrenal gland as well as renal and adrenal vessels and upper portion of ureter. Front half of kidney is removable to show cortex medulla and vessels as well as renal pelvis. On base, with detailed key card.

SB-3780 HUMAN KIDNEY L.S.

3 times enlarged, shows renal corpuscles, tubules, medulla, Calyx System and Pelvis as well as Blood Vessels and Upper portion of Ureter with key card.

- a) On Board.
- b) On Stand.



SB-3780



SB-3783

SB-3783 URINARY ORGANS KIDNEY WITH BLADDER

Natural size, kidneys, ureter, adrenal glands and bladder with prostate as well as the large abdominal right kidney sectioned to show all anatomical details, mounted on base.

SB-3785 URINARY ORGANS

Natural size separates into 3 parts. Kidneys, ureter, adrenal glands, bladder with prostate and major blood vessels are shown. Right kidney sectioned and bladder prostate are removable. On base. With detailed key card.



SB-3785

SB-3788 URINARY ORGANS

Urinary System in reproductive organs natural size, dissectable into six parts, for male and female mounted on board with detailed key card.

SB-3790 HUMAN FEMALE PELVIS

A 3-dimensionsal model, life size superficial and deep structures, half pelvis is shown, dissectable into 3 parts, showing sagittal section. The vagina, vulva, uterus, can be removed.



SB-3785

SB-3790 HUMAN FEMALE PELVIS

Life size, right half of the pelvis showing female reproductive organs, bladder, uterus, rectum and ovary. Mounted on base.

SB-3792 HUMAN FEMALE PELVIS

Same as above, but smaller in size.



SB-3796

SB-3796 HUMAN MALE PELVIS

Life size showing internal and external reproductive organs and other vital organs of pelvic area. Mounted on base.

SB-3800 HUMAN MALE PELVIS

A 3-dimensionsal model, life size, dissectable into 2 parts, the half portion shows the penis and bladder, the peritoneum and underline muscles, veins and arteries are also shown.

SB-3801 PREGNANCY PELVIS WITH BABY

Representation of median section through the female pelvis in 9th month of pregnancy with removable fetus. An excellent model to study normal position of child before birth. On base. With detailed key card.



SB-3801

SB-3802 ARTIFICIAL HUMAN SKULL, 3 PARTS

The most popular skull for anatomical study, at very affordable price.



SB-3802

SB-3805 ARTIFICIAL HUMAN SKULL, 2 PARTS

Basic version for demonstration in elementary schools. Lower jaw is removable.



SB-3805



SB-3807

SB-3807 HUMAN SKELETON MODEL

Made of fibre glass, a life size , duly articulated, mounted on movable stand.

Same as above but made of PVC Plastic.

SB-3808 HUMAN SKELETON MODEL

Same as above, made of PVC plastic, medium size 85 cm, shows nerves and blood vessels, depicts and position, course and distribution of main arteries and peripheral nerves.

SB-3810 HUMAN SKELETON MODEL

Small size, approx. 560 mm in height, mounted on metal stand, economically priced.



SB-3810

SB-3812 PERIOD OF GESTATION

A set of nine models, mounted on stand consists of the following stages.

1. An embryo about 6 days old, considerable enlarged.
2. Uterus with embryo in the First month of gestation.
3. Uterus with the embryo in the 3 month of gestation
4. Uterus with fetus, the 4th month.
5. Uterus with fetus, placenta and umbilical cord.
6. Uterus with fetus, the 5th month.
7. Uterus with fetus in 7th month of pregnancy.
8. Uterus with fetus in 8th month of pregnancy.
9. Uterus with fetus in 9th month of pregnancy.



SB-3812

SB-3815 PERIOD OF GESTATION

Same as above but embryos are removable, installed on separates stand in the 1st, 2nd and 3rd months and removable foetus in 5th and 7th months.



SB-3815



SB-3818

SB-3818 ANIMAL CELL MODEL

The model shows the delicate structure of Animal Cell. In addition to the organelle like nucleus, endo plasmatic reticulum, mitochondria, ribosome respectively polysomes and Golgi apparatus. The Model also shows lysosomes and fat vacuoles, centrioles. The presentation of the process of extrusion of Golgi bodies and pinocytic signs is shown by the cell dynamics. A 20000 times enlarged most beautiful model, colored to bring out the high degree of segmentation of a cell mounted on board stand. With detailed key card.



SB-3820

SB-3820 ANIMAL CELL DIVISION MITOSIS

A set of 10 models, showing resting cell, early prophase, prophase late prophase, metaphase, anaphase, late anaphase, Telophase and daughter cells. Mounted on wooden board.

SB-3823 MITOSIS MODEL SET OF 8

Robust model illustrating the process of mitotic cell division. The chromosomes are painted to allow easy identification. Models are approx. 150 x 120 mm.



SB-3824

SB-3824 ANIMAL CELL DIVISION MEIOSIS

A set of 12 models, showing detailed stages in meiotic cell division, beautifully colored to bring out the detailed structure as seen under the microscope. A very useful and instructive model. Mounted on board.

SB-3826 ANIMAL MITOSIS SET

This set comprises of 8 models with 2 explanatory introductory models, enlarged many times. The series show the processes of meiosis in the division of chromosomes and the arrangement of genomum within the cell multiplication. The crossing over processes are not shown in one piece. Individually mounted on stand with base.



SB-3826



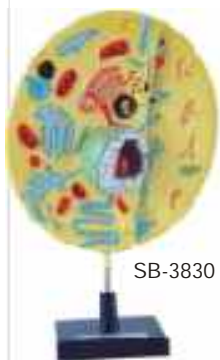
SB-3828

SB-3828 ANIMAL MITOSIS SET

It is greatly enlarged many times, showing late inter phase, prophase, beginning metaphase, metaphase equatorial plane, anaphase migration of daughter chromosomes, late anaphase, telophase and daughter cells in the early inter phase. The models are individually mounted on stand

SB-3830 ANIMAL CELL

A 3 dimensional model, highly magnified representation of typical and generalized animal cell, showing both microscopic and ultramicroscopic details . Mounted on stand with key card.



SB-3830



SB-3835

SB-3835 STAR FISH

The model shows details of complete arm. With normal position of organs with cut sectioned, with detailed key card, mounted on board.

SB-3837 MODEL OF AMOEBA PROTEUS

1000 times enlarged approx.. it is featured three-dimensionally and is large enough for showing all the intricate parts. Students can see the pseudo podia, uroid hyaline cap, ectoplasm, nucleus, contractile vacuole, mitochondrion, crystals, food vacuoles, lysosome and pinocytosis. On board, with detailed key card. Size 480 x 310 x 80 mm approx.



SB-3837

SB-3838 FISH ANATOMY MODEL (PERCH)

Showing all the general structure after dissection mounted on stand. Very useful for demonstration, highly finished with detailed key card.



SB-3838

SB-3840 HEN DISSECTION MODEL

Natural size, showing right side, the feathers an the other side showing internal organs, mounted on base. With detailed key card



SB-3840



SB-3842

SB-3842 PARAMECIUM MODEL

Extra large size, approx.. 1600 times, showing cell inventory of protozoa: macro and micro nucleus, contractile vacuoles, cytosome with membranelae, myonemes and food vacuoles and the formation of the endo and ectoplasm and the network of neuronemes. The detailed block shows the structure of pellicle of the ectoplasm, and the position and order of trichocysts and range of cilia in typical order. Dissected into two parts. On stand. With detailed key card. Size 390 x 260 x 610 mm approx..



SB-3848

SB-3845 PARAMECIUM MODEL

Showing general structure with explanatory notes, on board size 400 x 250mm approx.

SB-3848 FROG DISSECTION MODEL

Model showing section of frog. This model shows detailed internal structure of frog. A large model of wooden base

SB-3850 **FROG DEVELOPMENT**

A set of 24 models showing the various stages of the development of frog, from egg to adult. Arranged on the large size wooden board

SB-3852 **EARTHWORM DISSECTION**

A model showing the external character in a portion and the dissection in the remaining, exhibiting all important system. A very useful model mounted on board. Dimensions overall 60 x 30 x 10 cm.



SB-3850



SB-3852

SB-3855 **HYDRA L.S. MODEL**

Showing mouth, coelenterons, testis gland cell, ovum. Ovary etc. mounted on board size 240 x 400 mm approx.. With detailed key card.



SB-3852

SB-3857 **MODEL OF D.N.A**

Model showing segment of D.N.A molecule mechanism of replication, to show the double helix coiling and reforming nucleotides and the structural formula to show the molecules shapes and bonds and angles distorted. Complete model arranged on a board.

SB-3859 **MODEL OF R.N.A**

(Ribonucleic acid) Model showing R.N.A. molecule, D.N.A. Template molecule shapes and bonds and angles distorted. Complete model arranged on board.

SB-3862 **MODEL OF HELICAL D.N.A**

It is plastic moulded and mounted on the wooden board. The part of Deoxyribonucleic Acids (DNA) model is colored. The DNA molecule consists of two long parallel chains or stands which are joined together by short cross bars at regular intervals. The two chains are spirally coiled about each other to form double helix. The base face interior of the double helix whereas sugar and phosphate components form a backbone on the outside. Bases are : Adenosine, Guanine, Cytosine and Thyinine. They are represented as A,G,C and T and A is linked with T whereas C with G by Hydrogen bond.



SB-3862

SB-3865 TYPICAL FLOWER

Large size, beautiful model of a typical flower, all parts, detachable, ovary with a single ovule inside. On base, with detailed key card.



SB-3865

SB-3867 TYPICAL FLOWER MODEL L.S.

Showing L.S. of lower, mounted on board 325 x 250 x 60 mm approx. with detailed key card.



SB-3867

SB-3869 PLANT CELL

Enlarged many time, showing the microscopic structure. Size 190 x 320 x 70mm. approx. On base, with detailed key card.

SB-3873 TYPICAL PLANT CELL

As seen under the electron microscope, a greatly enlarged and beautiful model showing ectoplast, endoplast, tonoplast, vacuoles and the nuclear structure etc. mounted on base, with detailed key card.



SB-3873

SB-3869



ANATOMY OF DICOT STEM T.S. & L.S. COMBINED

Explaining the complete blood circulation in veins and arteries. Mounted on board. On base, with detailed key card.

SB-3875 DICOT STEM T.S.

Showing various tissues vascular bundles in transverse section of dicot stem of sun flower. Mounted on bard.



SB-3875

SB-3877 DICOT STEM HERBACEOUS

Showing cellular structure both in cross and longitudinal section, mounted on bard size 300 x 150 x 280mm approx..

SB-3880 MONOCOT STEM ANATOMY T.S. & L.S.

This model exhibits and various tissues and the scattered closed and collateral vascular boundless and transverse and longitudinal section in maize. The large pitted vessels, spiral and annular vessels show the anatomy of monocot stem. Mounted on base with detailed key card. Dimensions overall 52 x 15x 42.5cm.



SB-3880

SB-3883 MONOCOT STEM T.S.

Showing various tissues vascular bundles in transverse section of monocot stem of maize. Mounted on board with detailed key card.



SB-3883

SB-3884 LEAF ANATOMY

3 – Dimensional model of leaf showing detailed structure of transverse section and longitudinal section. A large size model on stand.



SB-3884

SB-3885 DICOT LEAF V.S.

Showing details of typical mesophytic leaf. Mounted on board with detailed key card.



SB-3887

SB-3887 MONOCOT LEAF V.S.

Showing details of internal structure of a typical monocot leaf. Mounted on board



SB-3889

SB-3889 LEAF STOMATA

Showing stomata cells, mounted on board.

SB-3893 DICOT ROOT T.S.

Showing complete internal details, mounted on board, with detailed key card.



SB-3893

SB-3893 MONOCOT ROOT T.S.

Showing complete internal details of the root. Mounted on board.



SB-3893

SB-3895 ROOT TIP ANATOMY

Showing L.S. & T.S. of root cap maturation region and root hairs etc. mounted on stand. Three dimensional model.



SB-3895

SB-3897 MONOCOT STEM CORN

Demonstrating the general monocot cells and tissue types in several aspects, mounted on base size 580 x 230 x 360mm. approx.

SB-3900 DICOT ROOT TIP

This three parts colour model shows structure in cross and longitudinal section, it include a mature region, a region of maturation and growth and the root tip with root cap. Mounted on board size 450 x 250 mm approx.. A three dimensional model.



SB-3905

SB-3902 ROOT TIP OF FERN

The model shows the pointed growth resulting from an apical cell which branch out spirally from point of vegetation. Root shown in longitudinal and transverse section, detachable crown of root removable.

SB-3905 PLANT MITOSIS CELL DIVISION

A set of 10 models showing all the stages of karyokinesis and cytokinesis from metabolic cells of the formation. Form one cell to two cells, highly detailed, mounted on board

SB-3907 PLANT MEIOSIS CELL DIVISION

Asimplified model, smaller size.

SB-3909 PLANT MEIOSIS CELL DIVISION

A newly design model according to recent concept of chromosome changes form the resting nucleus to the formation of four daughter cells, complete mounted on bard size 600 x 450 x mm approx.

SB-3912 PLANT MEIOSIS CELL DIVISION

Asimplified model, smaller size.

Fertilization of the Angiosperms

Polygonum type, enlarged 300 times, mounted on base. Size 56 x 23 x 6 cm approx.. With detailed key card.



SB-3912

3D RAISED RELIEF PLASTIC SCIENTIFIC MODELS

HUMAN ANATOMY (SET OF 11)

- Skeleton
- Circulatory System
- Heart
- Nervous System
- Section Of Brain
- Muscles
- Digestive System
- Respiratory System
- The Ear
- The Eye
- Human Kidneys



HUMAN REPRODUCTIVE ORGANS (SET OF 8)

- Male Genital Organs (front View)
- Male Genital Organs (Sigittal View)
- How Semen Is Formed
- First Week Of Egg Development & Implantation
- Fertilization (Cross Section) Diagram Of An Ovary
- Eight Month Old Fetus
- Various Stages Of Embrionic Development
- Female Genital Organs

Available Size & Mounting :

- 20x35 Cms (Supplied In Set Only-sheet Only)
- 20x35 Cms (Supplied In Set Only-in Plastic Jacket)
- 35x50 Cms (Sheet Only - In Box)
- 35x50 Cms (In Plastic Jacket)
- 35x50 Cms (Aluminium Framed)
- 50x70 Cms (Sheet Only)
- 50x70 Cms (Aluminium Framed)

BOTANY-I (SET OF 8)

- Root , Stem & Bud (a).
- Root, Stem & Bud (b).
- Leaves & Their Transformation.
- Photosynthesis.
- Flower & Inflorescences (a).
- Flower & Inflorescences (b).
- Fruit & Seeds (a).
- Fruit & Seeds (b).

Available Size & Mounting :

- 25x35 Cms (Supplied In Set - sheets only)
- 25x35 Cms (Supplied In Set - In Plastic Jacket)
- 50x70 Cms (Sheet Only in Box)
- 50x70 Cms Complete with Hard Backing Wooden / Aluminium Frame)

BOTANY II (SET OF 8)

- Typical plant cell.
- Plant Mitosis.
- Meiosis
- D.N.A.
- R.N.A.
- Bacteria.
- Spirogyra.
- Funaria.



Available Size & Mounting :

- 25x35 Cms (Supplied In Set - sheets only)
- 25x35 Cms (Supplied In Set - In Plastic Jacket)
- 50x70 Cms (Sheet Only in Box)
- 50x70 Cms Complete with Hard Backing Wooden / Aluminium Frame)

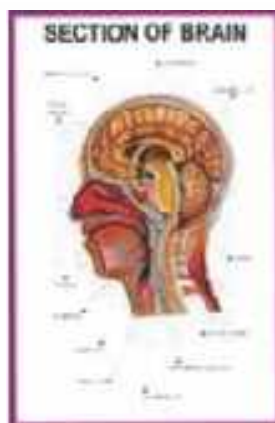
BOTANY III (SET OF 8)

- Fertilization.
- T.S. Dicot leaf.
- T.S. Monocot leaf.
- T.S. Dicot root
- T.S. Monocot root
- T.S. Dicot stem
- T.S. Monocot stem
- Types of placentation.



Available Size & Mounting :

- 25x35 Cms (Supplied In Set - sheets only)
- 25x35 Cms (Supplied In Set - In Plastic Jacket)
- 50x70 Cms (Sheet Only in Box)
- 50x70 Cms Complete with Hard Backing Wooden / Aluminium Frame)



SB-3001 PHOENIX MICROSCOPE

Specially designed for junior students for elementary education and demonstration to beginners.

Features :

Vertical Monocular body height 275mm.

Mechanical tube length 160mm.

Fixed square stage 75 x 85mm with stage clips.

Rack & Pinion arrangement for focusing.

Plano concave mirror 38mm.

Optical Components :

Achromatic Objective	:	10 x
Huygenian Eyepiece	:	10 x or 15x
Magnification	:	100 x or 150x



SB-3001



SB-3002

SB 3002 SCHOOL MICROSCOPE (SINGLE NOSE)

Same as SB-3001, but with U Shape base, monocular stable inclinable body, having coarse motion, light control by iris diaphragm.

SB 3005 STUDENT MICROSCOPE (IRIS TYPE)

Monocular stable inclinable body, square stage 100 x 100mm triple revolving nose piece, coarse focusing by rack and pinion, fine motion by lever system, illumination controlled by iris diaphragm. Stopper for slide safety. All parts aluminum die casted and Enamel coated, packed in thermocol, with vinyl cover, duster and cleaning brush.

Optical Combination

Achromatic objective	:	10x and 40x
Huygenian Eyepiece	:	10x or 15x
Magnification	:	100x to 600x

Option: LED Sub stage Lamp.



SB 3005

SB 3006 STUDENT MICROSCOPE (FIXED CONDENSERS)

Same as SB-3005 but iris diaphragm and condenser fixed under stage.

Optical Combination :

Achromatic objective	:	4x, 10x and 40x
Huygenian Eyepiece	:	10x or 15x
Magnification	:	40x to 600x

Option: LED Sub stage Lamp.



SB 3006



SB-3007

SB-3007 JUNIOR STUDENT MICROSCOPE

This economical Microscope is perfect for middle school needs, student can clearly examine specimens up to 1500x magnification.

Body	Monocular Tube, Inclinalable upto 90° mechanical tube length 160mm.
Stage	Fixed square stage size 100 x 100 mm with stage clips.
Condenser	Movable with iris diaphragm by rack and pinion.
Nose Piece	Triple revolving nose piece with positive centering & click stops.
Illumination	Plano-concave mirror diameter 50mm. Mounted on gimble mount.
Eye Pieces	Huy. 10X and 15X.
Objective	Achromatic 4X, 10X, 40X (SL) & 100X Oil Immersion
Accessories	Filter, vinyl cover, duster and cleaning brush.
Packing	In full mould Styrofoam Thermocol container or wooden cabinet.
Optional Acc.	a. Eye piece with pointer b. Mechanical Stage detachable. c. Illuminator Electric. d. Sub stage lamp-15 Watts 220 Volts AC.

Option: LED Sub stage Lamp.

SB-3010 STUDENT MICROSCOPE (Disc Diaphragm)

This economical Microscope is perfect for middle school needs, student can clearly examine specimens up to 1500x magnification. microscope great stability. The microscope is focused by rack and pinion mechanism with a clutch system to prevent damage when the upper or lower rack stop is reached. The large stage has two locked-on stage clips, and a sub-stage fine aperture disc diaphragm for adjustment of image contrast. Illumination is by sub stage gimbals mounted reversible Plano-concave mirror. Supplied with Huyghenian Eyepieces H 10X, H 15X, Achromatic Supplied Inclinalable through 90° on a heavy horseshoe foot which gives the

Objectives : 4x, 10x & 40x (SL). in thermocole box/ wooden cabinet, with dust cover.

Option: LED Sub stage Lamp.



SB-3010

SB-3012 STUDENT COMPOUND MICROSCOPE (Disc Diaphragm)

Inclinable through 90° on a heavy horseshoe foot which gives the microscope great stability. The microscope is focused by rack and pinion mechanism. The large stage has two locked-on stage clips, and a sub-stage the aperture disc diaphragm for adjustment of image contrast. Illumination is by sub stage gimbals mounted reversible Plano-concave mirror.

Supplied with Huyghenian Eyepieces H 10X, H 15X, Achromatic Objectives 4X, 10X & 40X (SL). Supplied in thermocol box/wooden cabinet, with dust cover.

Option: LED Sub stage Lamp.



SB-3012 (Option)

SB-3015 JUNIOR STUDENT MICROSCOPE

Body Monocular with horse-shoe shaped base, hinged type inclinable up to 90° mechanical tube length 160mm.



SB-3015

Stage	Fixed square stage 120 x 120mm with Mechanical stage.
Nose Piece	Quadruple revolving nose piece with positive centering & click stops.
Condenser	Abbe condenser (NA 1.25) with iris diaphragm and filter holder moving up and down by rack and pinion.
Focusing	Separate coarse and highly sensitive fine focusing knobs with Graduated drum cup 0.002mm.
Safety Device	Adjustable safety stopper prevents damage to slide and objectives.
Illumination	Plano-concave mirror 50mm diameter mounted on gimble mount replacement by sub-stage microscope lamp.
Finish	Staple cream/ Black finish.
Eye Pieces	Huy. 10X and 15X.
Accessories	Blue filter, Vinyl Cover, Duster, Cleaning Brush Supplied in thermocol box/ wooden cabinet, with dust cover.
SB-3015 A	Huyghenian Eyepieces 5X, 10X, 15X (Any Two). Achromatic Objective : 4x, 10x, 40x (SL) Magnification : 20x-600x.
SB-3015 B	Huyghenian Eyepieces 5X, 10x, 15x (Any two). Achromatic Objective 4X, 10X, 40X (SL) and 100X(SL) Oil Immersion Magnification 20x-1500x

Optional Accessories :

Eye-Pieces Wide Field/ Eye-Pieces with Pointer

Mechanical Stage detachable

Illuminator Electric Sub stage lamp, 15watts, 220 Volts AC.

Option: LED Sub stage Lamp.

SB-3018 MICROSCOPE STUDENT, INCLINED

This microscope has all feature for comfortable viewing when seated.

Body	Inclined at 45° monocular with horse-shoe shaped base. Eye tube inclined at 45°.
Stage	Fixed square stage 120 x 110mm with stage clip.
Nose Piece	Triple/Quadruple revolving nose piece with positive centering & click stops.
Condenser	Abbe condenser (N.A. 1.25) with iris diaphragm filter holder moving up and down by rack and pinion.
Focussing	Separate coarse and highly sensitive graduated fine focusing knobs.
Safety Device	Adjustable safety stopper prevents damage to slide and objectives.
Illumination	Plano-concave mirror 50mm diameter mounted gimble mount. LED sub stage lamp.
Finish	Black colour/ White Staple.
Accessories	Blue, filter, Vinyl cover, Duster, cleaning brush. Supplied with eyepiece 10X WF and achromatic objectives 4x, 10x, 40x (SL).
Optional Acc.	a. Eye piece with pointer b. Objective 100x (SL) Oil immersion. c. Illumination Electric Sub stage Lamp, 15 watts, 220 Volts AC.



SB-3018



SB-3020/1



SB-3020/2

SB-3020 MICROSCOPE INCLINED MONOCULAR

Well designed and attractive inclined microscope having 45° inclined, 360° rotatable tube, ordinary or halogen bulb with centrable light arrangement. Quadruple nose piece, coarse and fine graduated motion knobs and graduated mechanical stage, bright field Abbe condenser, N.A. 1.25 with iris diaphragm and swing out filter holder. With detachable mechanical stage. Supplied with vinyl cover, duster cleaning brush, lens paper, oil immersion 25ml, in Thermocol Box/ Wooden cabinet with lock and key.

Optional Components :

Achromatic Objective	:	4x, 10x, 40x(SL), 100x (SL) oil immersion.
Eyepieces	:	10x, (W.F) and 5X (H) or 15x (H).
SB-3020/1	:	Having built in base transformer for 6V/20 Watt halogen bulb.
SB-3020/2	:	Illumination with LED.

SB-3025 MICROSCOPE BINOCULAR

Robust and attractive inclined microscope having 45° inclined, 360° rotatable tube, ordinary or halogen bulb with centrable light arrangement. Quadruple nose piece, coarse and fine graduated motion with ball bearing guide way mechanism, bright field Abbe condenser, N.A. 1.25 with iris diaphragm and swing out filter holder. With coaxial mechanical stage. Supplied with vinyl cover, duster cleaning brush, lens paper, oil immersion 25ml, in Thermocol Box/ Wooden cabinet with lock and key.

Optional Components :

Achromatic Objective : 4x, 10x, 40x(SL), 100x (SL) oil immersion.

Eyepieces : 10x, (W.F) and 5X (H) or 15x (H).

Models:

SB-3025/1 : Having built in base transformer for 6V/20 Watt halogen bulb

SB-3025/2 : Illumination with LED.



SB-3025

SB-3018 BINOCULAR RESEARCH MICROSCOPE (Coaxial)

Well designed and attractive inclined microscope having 45° inclined, 360° rotatable tube, halogen bulb with centrable light arrangement. Quadruple nose piece, coarse and fine graduated motion with coaxial mechanism and coaxial graduated mechanical stage, bright field Abbe condenser, N.A. 1.25 with iris diaphragm and swing out filter holder. Colour corrected optics provides a flat, high-resolution image through par focal and pre centered achromatic objectives and wide field eyepiece. All prisms and optical surfaces are anti-reflection coated. Supplied with vinyl cover, duster cleaning brush, lens paper, oil immersion 25ml, in Thermocol Box/ Wooden cabinet with lock and key.

Optional Components :

Achromatic Objective : 4x, 10x, 40x(SL), 100x (SL) oil immersion.

Eyepieces : 10x, (W.F) and 5X (H) or 15x (H).

Models:

SB-3025/1 : Having built in base transformer for 6V/20 Watt halogen bulb

SB-3025/2 : Illumination with LED.



SB-3018

SB-3025 TRINOCULAR RESEARCH MICROSCOPE

Same as BI-535, but with Tri-nocular head instead of Binocular head and specially designed color camera with power supply and a with resolution color monitor. Optional: Software for Image Analysis.

SB-3028 DISSECTING MICROSCOPE

Heavy stable round base, this model is equipped with joint revolving arm for moving the magnifying lens over full range of the stage. Stage provided with spring clips has an easily removable thick glass plate with arrangement for inserting white/ black plate. Metallic hand rests provided for easy working and reflection is obtained from Plano-concave mirror in fork. Microscope can be focused by smooth rack & pinion. Finished in black/ white stove paint and chromium finish, packed in wooden cabinet/ Thermocol Box.

Eyepieces : 10X & 20X . Stage size 100 x 100mm.

SB-3030 SENIOR DISSECTING MICROSCOPE

Same as BI-545 but with BULL EYE LENS 80mm dia. Instead of Eyepieces.



SB-3030 STEREOSCOPIC BINOCULAR MICROSCOPE

It is an extremely useful model suitable for all students as they learn faster when viewing the three dimensional images of specimens.

- Wide field eyepieces 10x or 15x paired.
- Straight Binocular head
- Fixed objective 2x or 3x.
- Magnification 20x or 30x.
- Eyepiece tubes adjustable to suit individual interpupillary distance 50-75mm.
- Working distance of 80mm.

Flat circular glass stage of 100mm dia with pair of stage clips Arm rest with mirror illuminator stand for easy manipulation focusing by rack and pinion mechanism. Supplied with polished wooden cabinet and dust cover.

SB-3035 STEREOSCOPIC BINOCULAR MICROSCOPE

This model has all features for model BI-550, but just to make it more economical the Arm rest and mirror illuminator stand has been eliminated.

SB-3038 STEREO BINOCULAR MICROSCOPE

The stereo microscope is rugged, all metal constructed scope that provides both flexibility in magnification ranges and long working distances for viewing difficult specimens. Eyepieces WF 10x or WF 15x paired A.R. coated. Inclined Binocular Head with 45° inclined eye tubes for optimum and comfort viewing, rotatable through 360°, can be locked in any position.

Interpupillary distance 50-75mm and both eye view has diopter adjustment for eye accommodation. Achromatic objective 2x or 4x Low and High power objectives are selected by rotating the nose pieces through 90°.

Magnification choice 50x-60x. Para focal and par centered.

Rack and Pinion focusing by large knob on both sides.

Two lamps are fitted to provide both incident (top) and transmitted (bottom) illumination. The lamps can be switched on separately or together. Complete with glass plate having two stage clips.

Operates on 220V-240V AC or 110V-120AC, 50-60Hz.

Metallic and glass plate on side black and other white plastic dust cover, cleaning brush, packed in wooden polished cabinet with lock and key.



SB-3035



SB-3038



SB-3040

SB-3040 BINOCULAR STEREO ZOOM MICROSCOPE

The special characteristics of zoom Microscope is that one can observe the object in three dimensions within the field of view. It ideally suited for Industries as well Biological Research where high precision, maximum working distance and large field coverage is required. The flat field parfocal zoom objectives provide continuously variable magnification up to 200x depending upon the eyepieces and auxiliary lenses used.



Esel International

62, Azad Nagar, Behind Khalsa Tent House,
Rampur Chowk, P.O. Industrial Area, Ambala Cantt.-133 001

Tel : +91 171 2699 059

Mob : +91 94161 83370, 94164 93069, 86070 97070

E-mail : info@eselindia.com, sales@eselindia.com